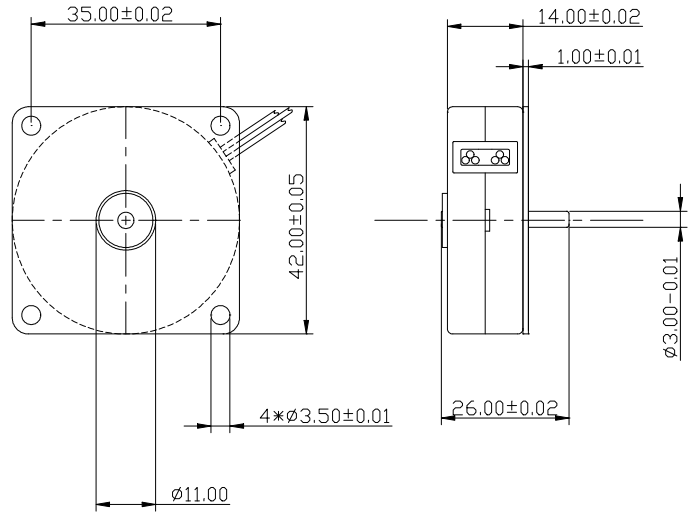
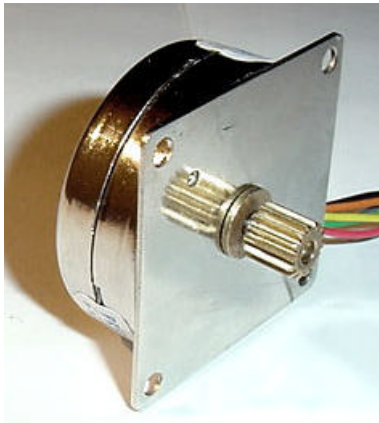
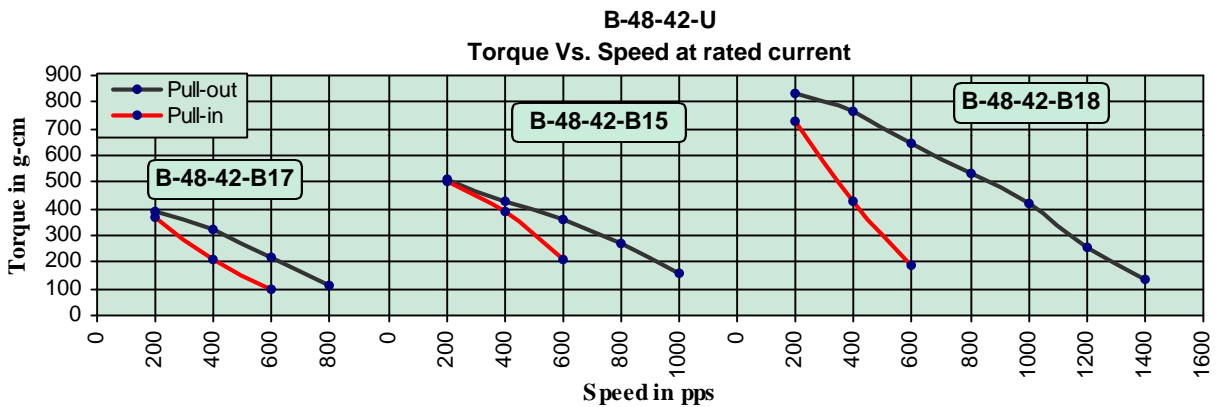


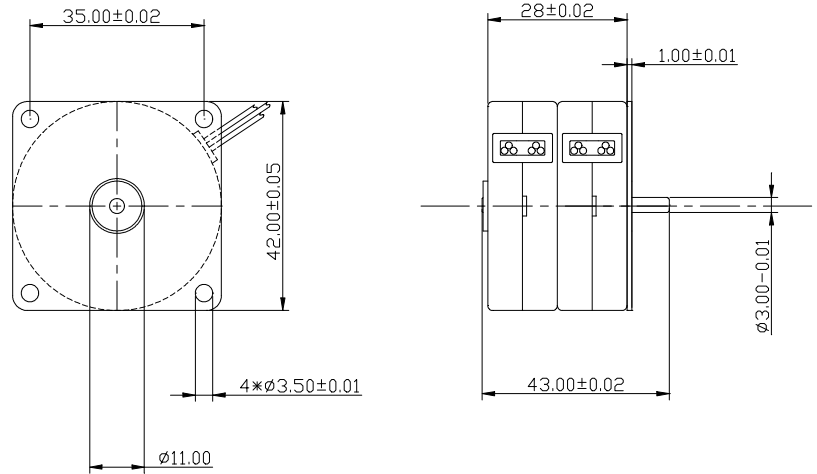
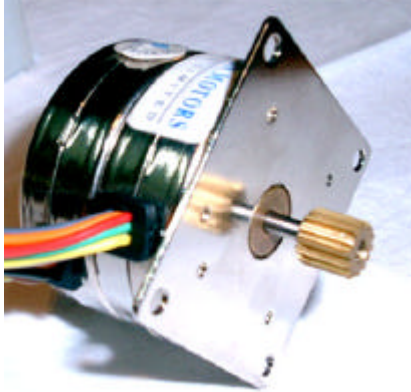
B-48-42-B



| SPECIFICATIONS | | B-48-42-B17 | B-48-42-B15 | B-48-42-B18 |
|----------------------------|------------------|-------------------------|----------------------------------|----------------------------------|
| | Units | Bipolar, Medium Torque | Bipolar, High Torque, High Speed | Bipolar, High Torque, High Speed |
| Operating Voltage | V | 6 | 12 | 24 |
| Rated Current | mA | 700 | 1000 | 800 |
| Resistance per phase | Ω | 8 | 12 | 30 |
| Inductance per phase | mH | 5 | 7 | 16 |
| Holding Torque | g-cm | 580 | 1650 | 1360 |
| Detent Torque | g-cm | 85 | 85 | 85 |
| Rotor Inertia | g-m ² | 10.6 X 10 ⁻⁴ | 10.6 X 10 ⁻⁴ | 10.6 X 10 ⁻⁴ |
| Weight | gms | 90 | 90 | 90 |
| Step Angle | degrees | 7.5 | 7.5 | 7.5 |
| Step angle accuracy | ° | +/- 0.5° | +/- 0.5° | +/- 0.5° |
| Max. operating Temperature | °C | 100 | 100 | 100 |
| Dielectric strength | | 1000 VAC for 1 min. | 1000 VAC for 1 min. | 1000 VAC for 1 min. |
| End play | mm | 0.2 | 0.2 | 0.2 |



D-48-42-B



| SPECIFICATIONS | | D-48-42-B27 | D-48-42-B25 | D-48-42-B28 |
|----------------------------|------------------|---------------------------|-----------------------|-----------------------|
| | Units | Bipolar, Medium Torque | Bipolar, High Torque | Bipolar, High Torque |
| Operating Voltage | V | 6 | 12 | 24 |
| Rated Current | mA | 700 per stack | 1000 per stack | 800 per stack |
| Resistance per phase | Ω | 4 | 6 | 15 |
| Inductance per phase | mH | 5 | 7 | 16 |
| Holding Torque | g-cm | 1015 | 2075 | 2410 |
| Detent Torque | g-cm | 105 | 105 | 105 |
| Rotor Inertia | g-m ² | 21.3×10^{-4} | 21.3×10^{-4} | 21.3×10^{-4} |
| Weight | gms | 175 | 175 | 175 |
| Step Angle | degrees | 7.5 | 7.5 | 7.5 |
| Step angle accuracy | ° | $\pm 0.5^\circ$ | $\pm 0.5^\circ$ | $\pm 0.5^\circ$ |
| Max. operating Temperature | °C | 100 | 100 | 100 |
| Dielectric strength | | 1000 VAC for 1 min. | 1000 VAC for 1 min. | 1000 VAC for 1 min. |
| End play | mm | 0.2 | 0.2 | 0.2 |

